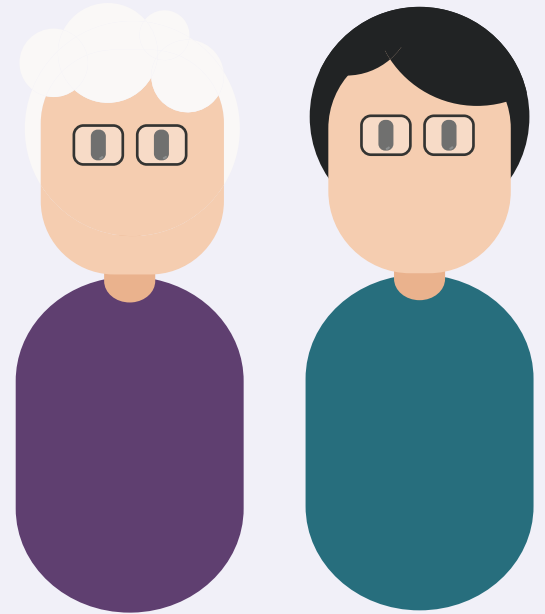


# Do you or a loved one have Alzheimer's disease or Parkinson's disease?

## We invite you to participate

in a research study set out to improve a device which could better the in-home monitoring of people with Parkinson's and Alzheimer's disease in the future.



## We invite you and your loved one to participate if you both:

- Are between **21** and **90** years old.
- Are **native English speakers**.
- Have no history of major psychiatric illness, brain injury/disease (other than Parkinson's or Alzheimer's disease).
- Have **no significant difficulties speaking or hearing**. Individuals who wear hearing aids and glasses may be eligible for the study.

## Want to volunteer or need more information?

- **LCAN Lab** (PI: Dr. Angela Roberts)
- **Phone: 847-467-4262**
- **Email: lcan@northwestern.edu**

## What are we asking of you?

- Complete a **testing battery** of your thinking, memory, language, and hearing abilities.
- Complete a series of **conversational tasks** set in a room with **sound environments**. A special new recording device will help us in the process.
- The study should take approximately **2 hours**.

## Logistics:

- This study will be performed at the **Audiology Clinic (NUCASLL)** at **Northwestern University, Evanston, IL**.
- You will be compensated for your participation.
- **Parking is provided.**